

- The VACONODOME is installed from the center outwards, eliminating expensive scaffolding and not requiring flat surfaces
- It can be installed adjacent to the tank and craned in position
- It can be built on EFRs in low or high position
- In new tanks of large diameters it is usually built on the tank bottom and hoisted up
- Sometimes the Dome is installed on the first course of the tank while the other courses are installed underneath and the tank is jacked up. This provides a closed and protected working space free of rain and wind, especially under adverse climatic conditions

Typical Dome Installation (shown on the bottom of a new 60m tank)



Installation starts with the inner ring and one tripod

Typical Dome Installation (shown on the bottom of a new 60m tank)



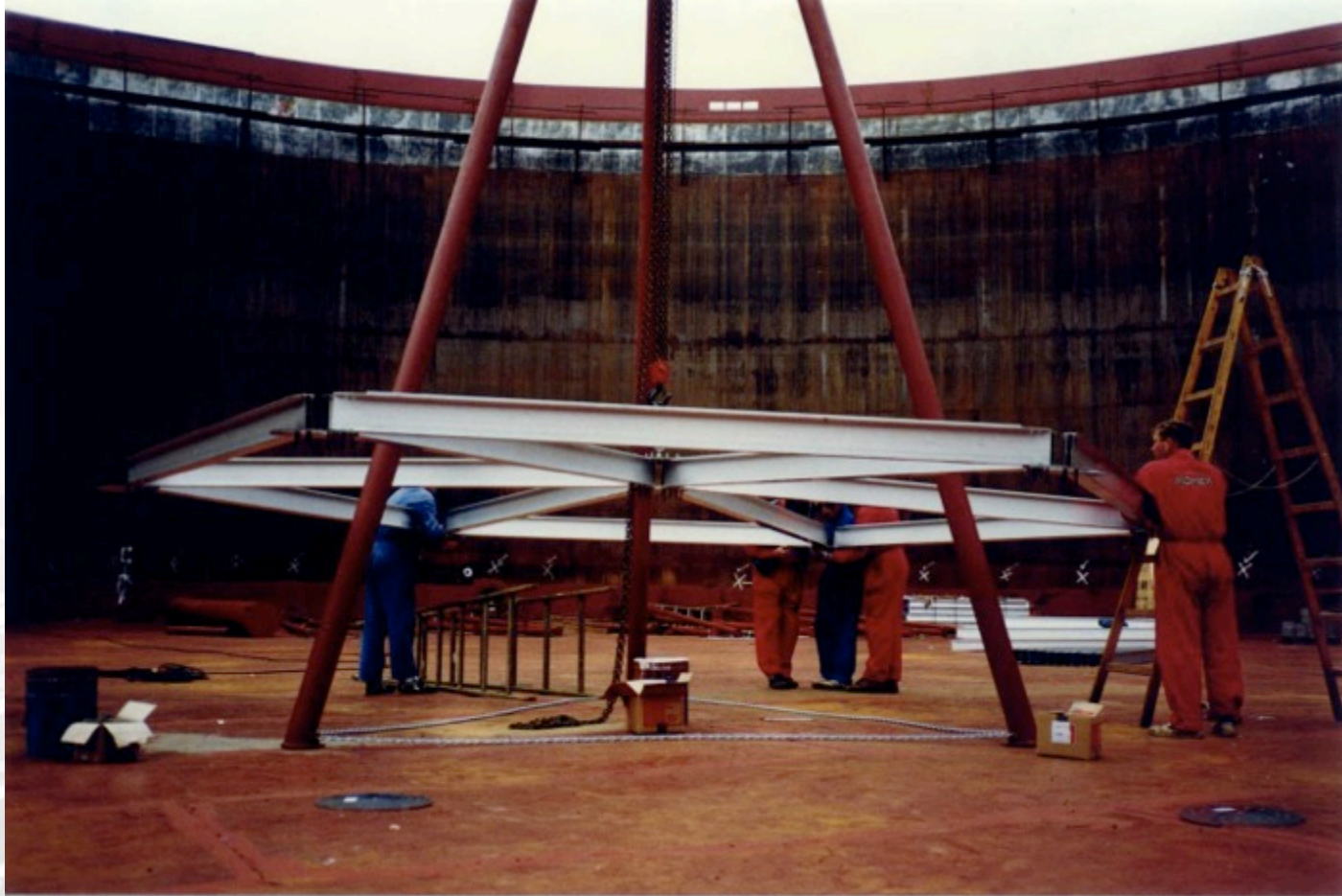
The members are connected with gusset plates and bolts
All Parts, members and gusset plates are individually numbered to
avoid mistakes

Typical Dome Installation (shown on the bottom of a new 60m tank)



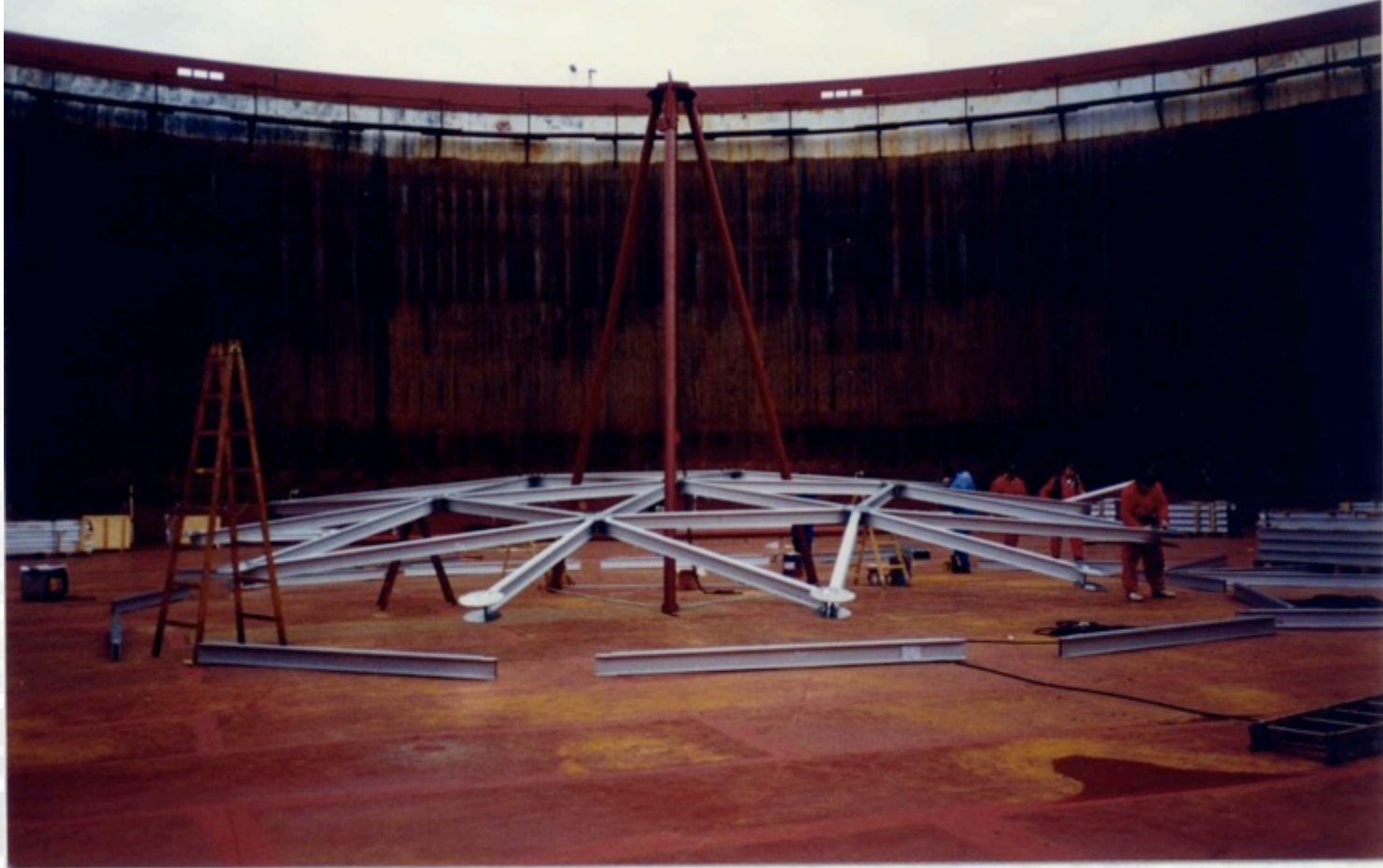
The painter's pin is used to lift the structure with the tripod

Typical Dome Installation (shown on the bottom of a new 60m tank)



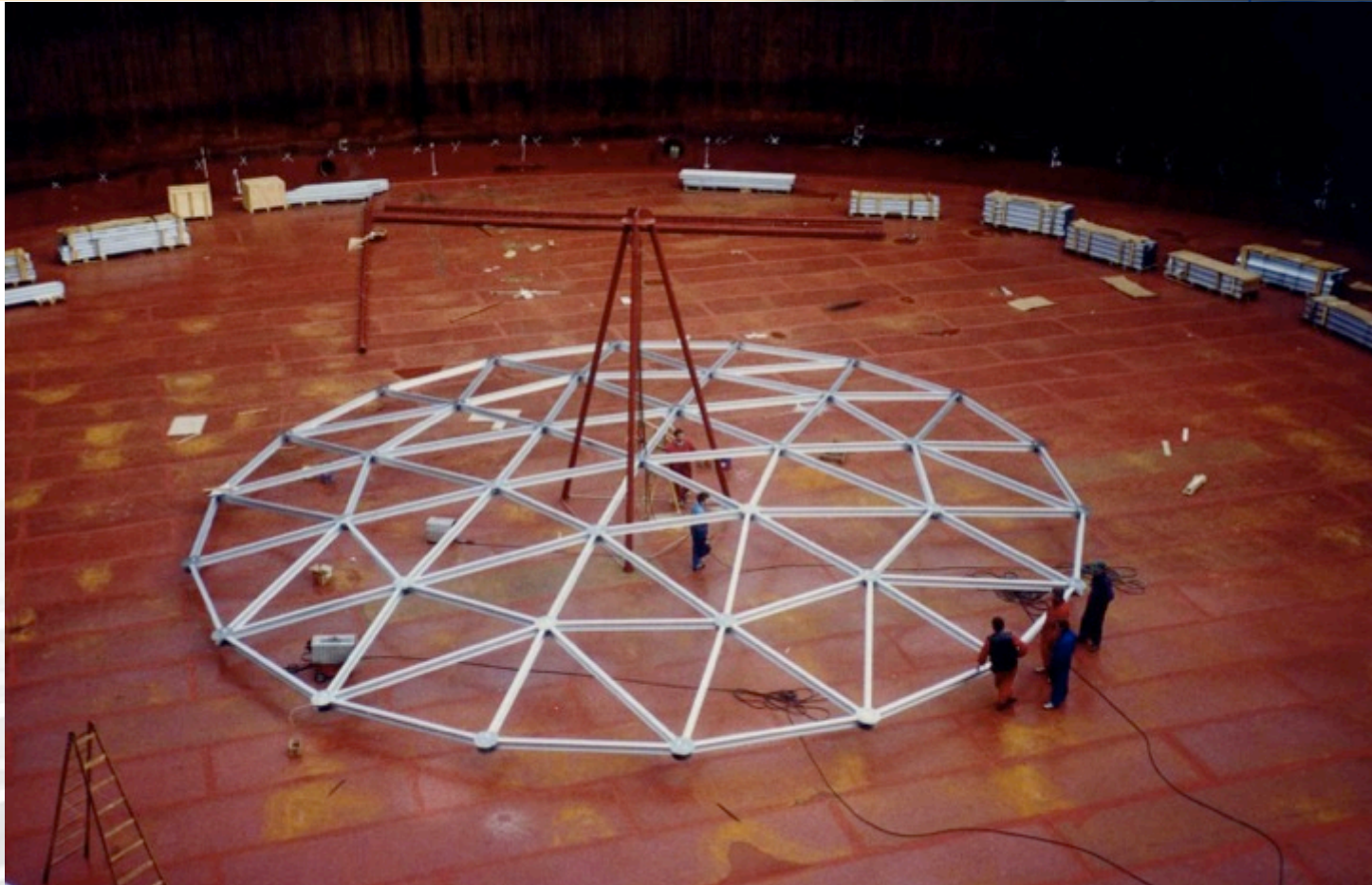
The structure is lifted to about 1m to continue with the next ring and work comfortably

Typical Dome Installation (shown on the bottom of a new 60m tank)



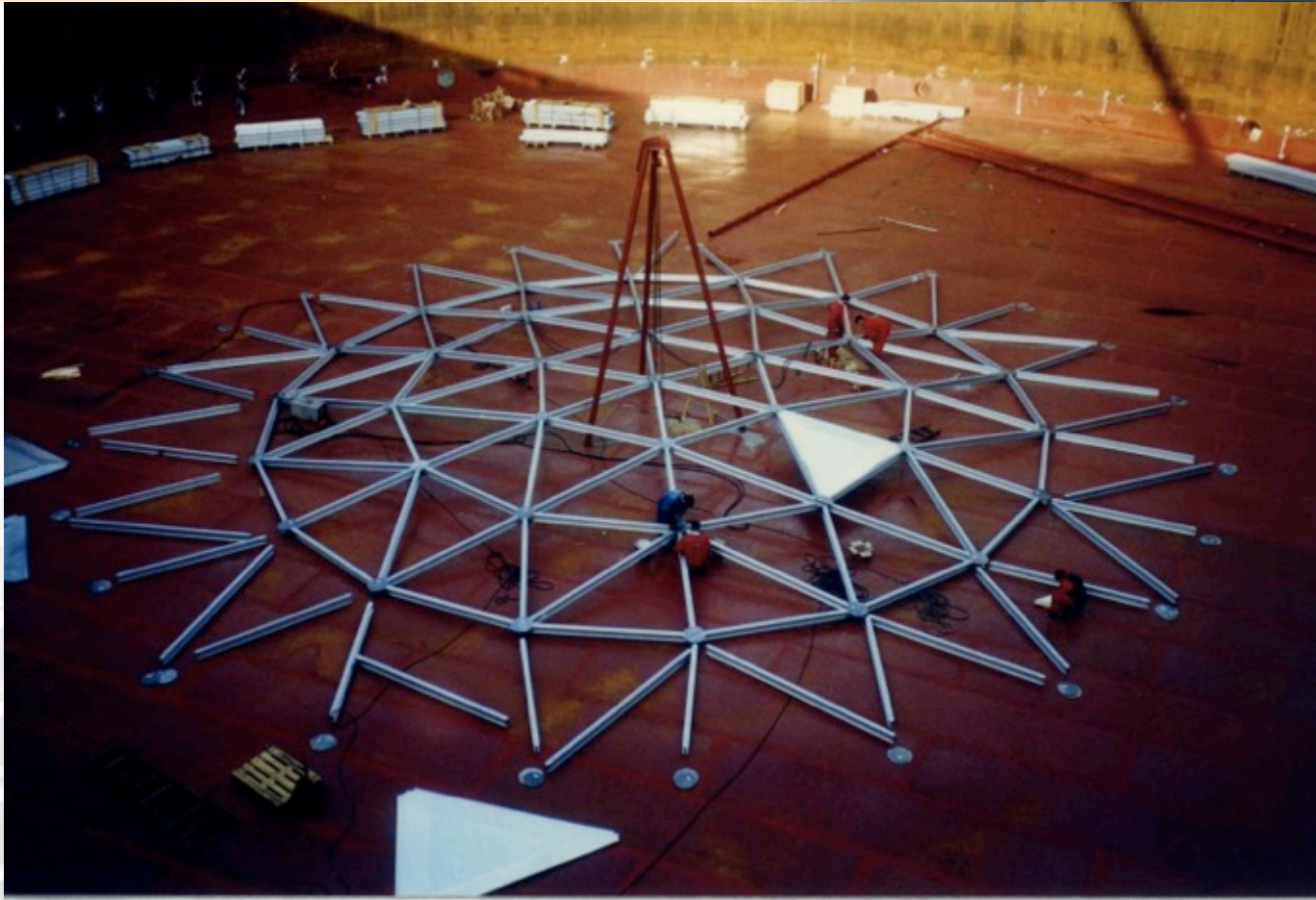
The next ring follows accordingly

Typical Dome Installation (shown on the bottom of a new 60m tank)



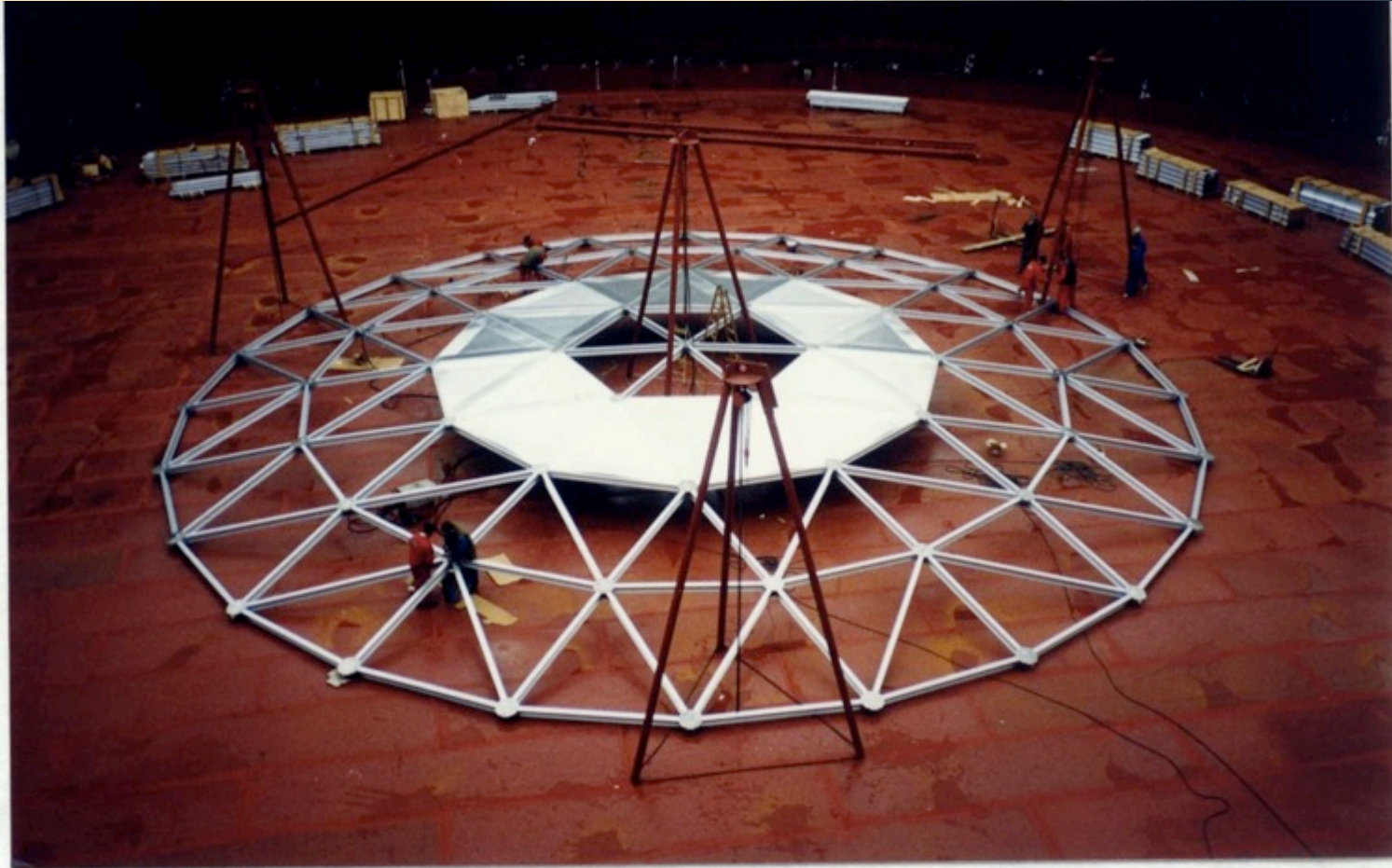
The next ring follows accordingly

Typical Dome Installation (shown on the bottom of a new 60m tank)



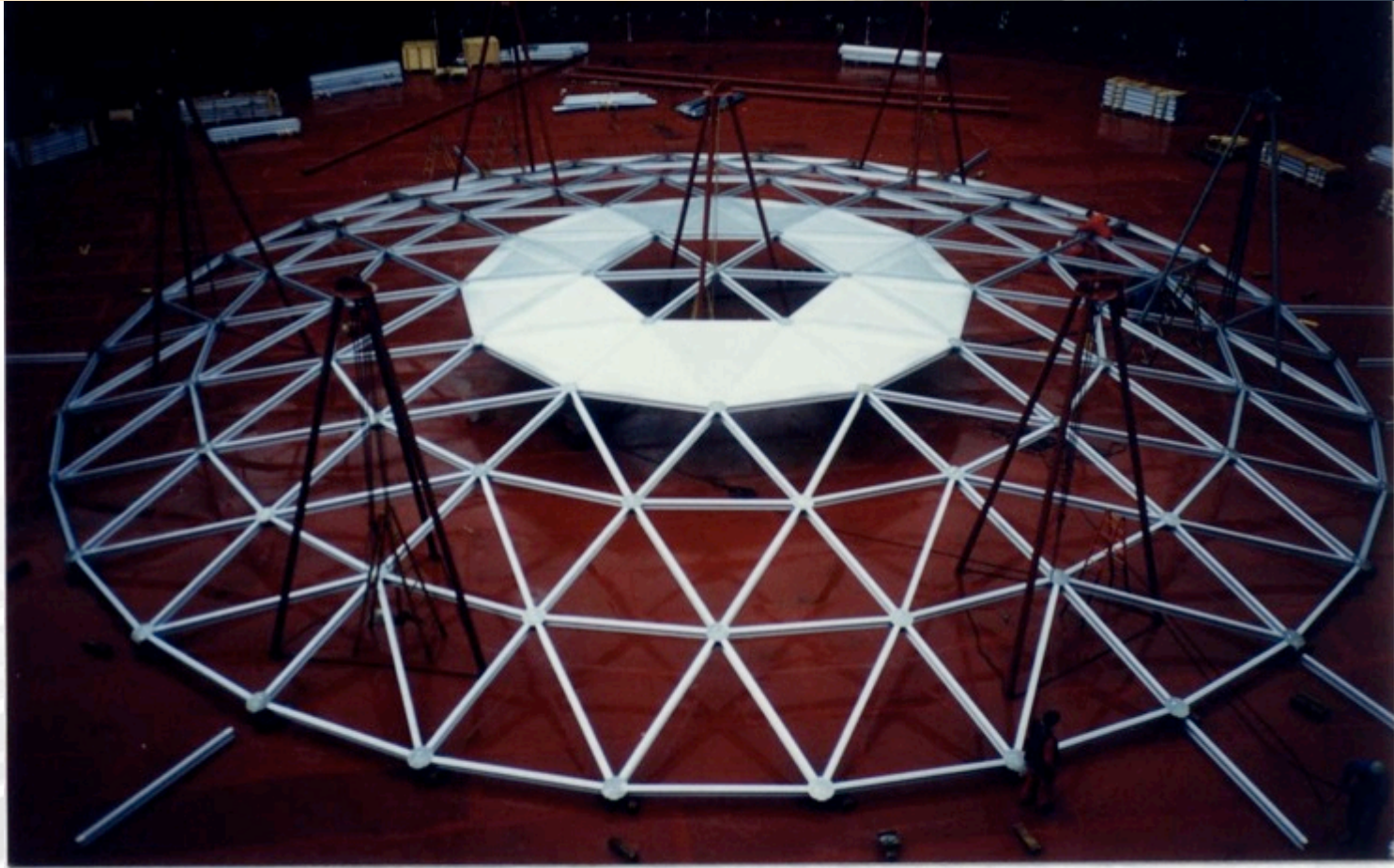
Sheets can be put on as soon as a ring has been closed

Typical Dome Installation (shown on the bottom of a new 60m tank)

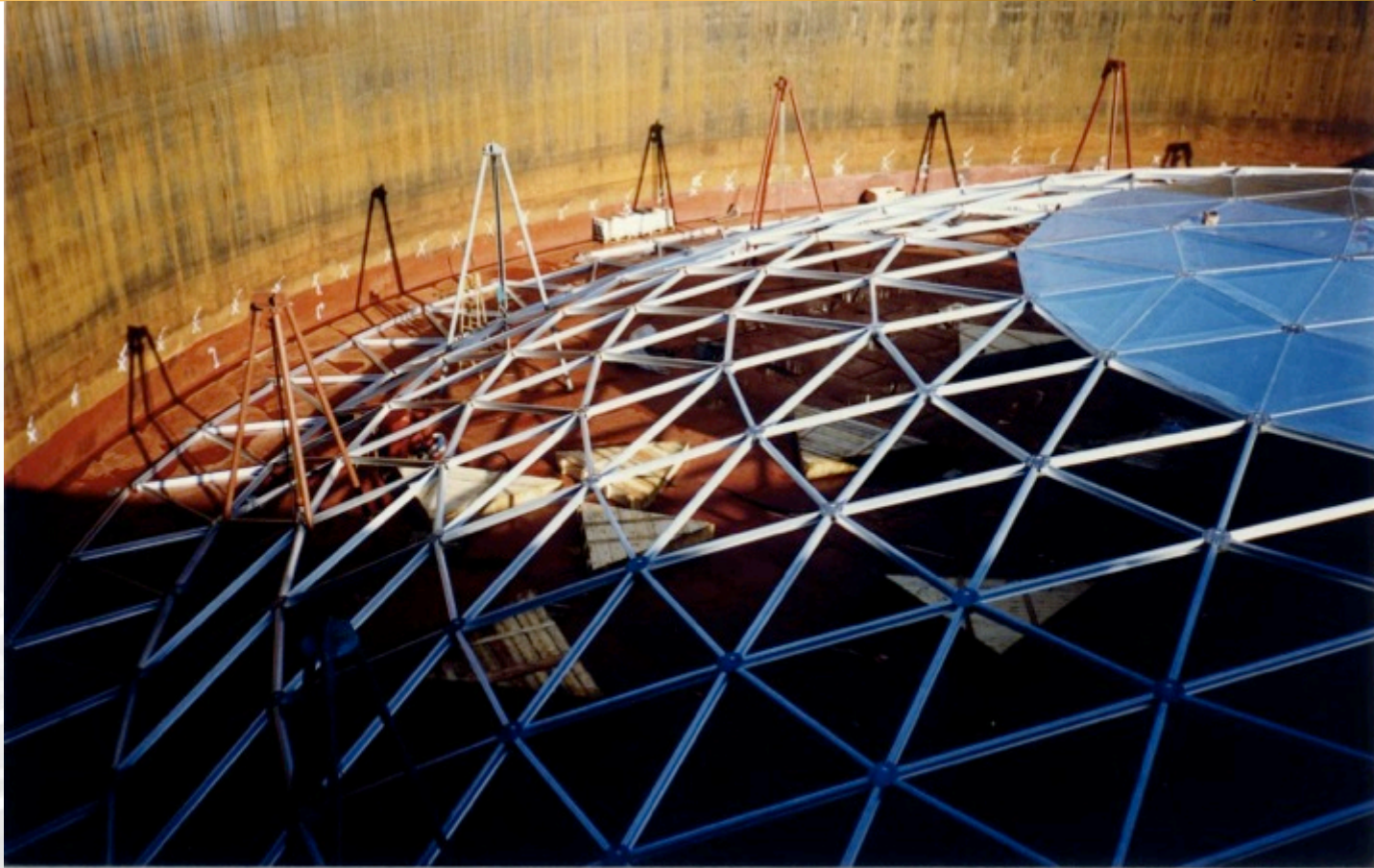


In the 4th ring 3 more tripods are typically added
The center tripod can be removed

Typical Dome Installation (shown on the bottom of a new 60m tank)

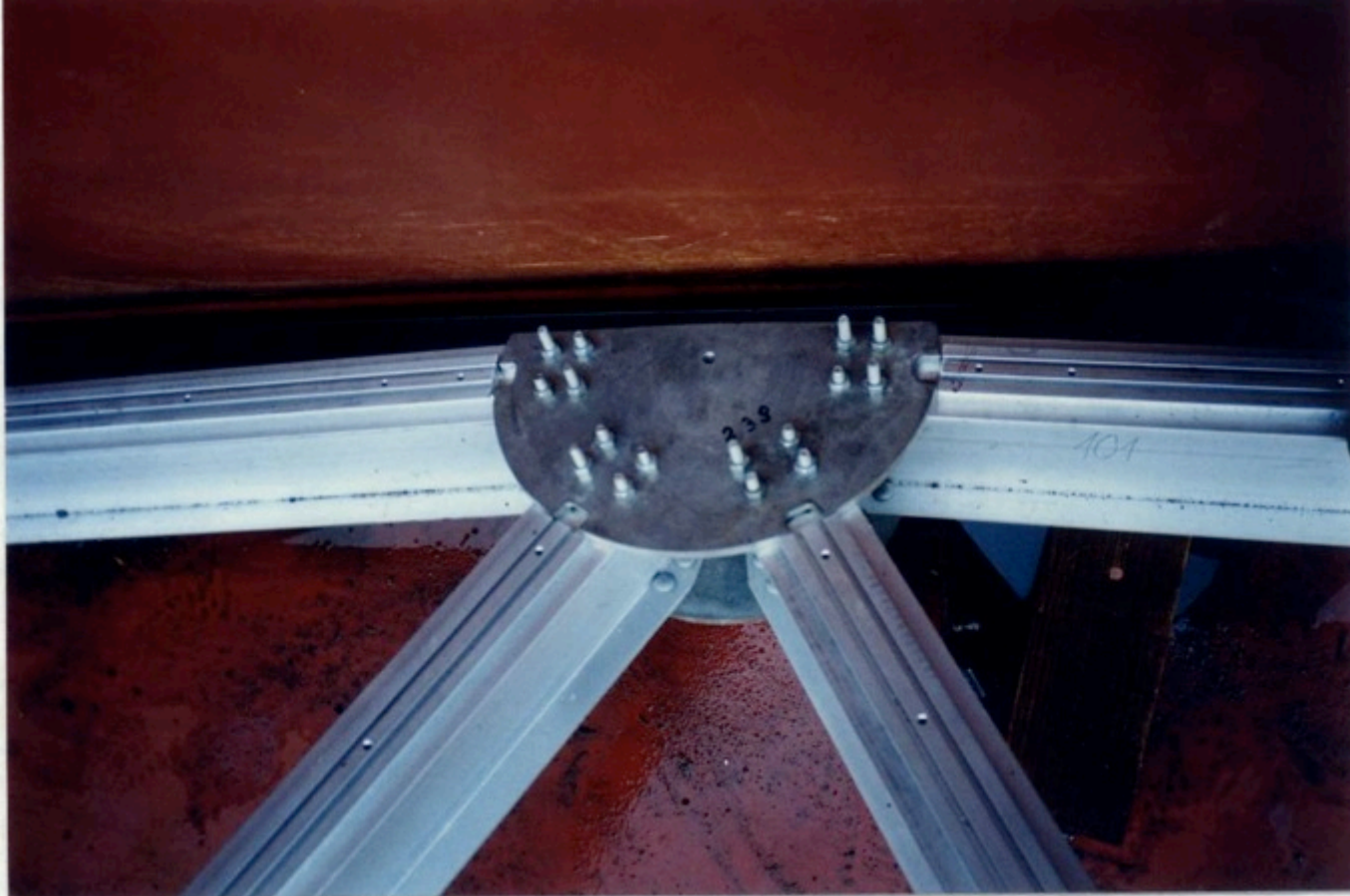


Typical Dome Installation (shown on the bottom of a new 60m tank)



The installation continues until all rings are closed and all panels are added

Typical Dome Installation (shown on the bottom of a new 60m tank)



Prior to lifting special half gusset plates are installed in the last ring

Typical Dome Installation (shown on the bottom of a new 60m tank)



Hoists are installed on the tank shell if the Dome shall not be lifted with a crane

Typical Dome Installation (shown on the bottom of a new 60m tank)



The Dome is hoisted to the top of the tank either manually or with a pneumatic system within a few hours

Typical Dome Installation (shown on the bottom of a new 60m tank)



The installation gussets are replaced by normal plates and

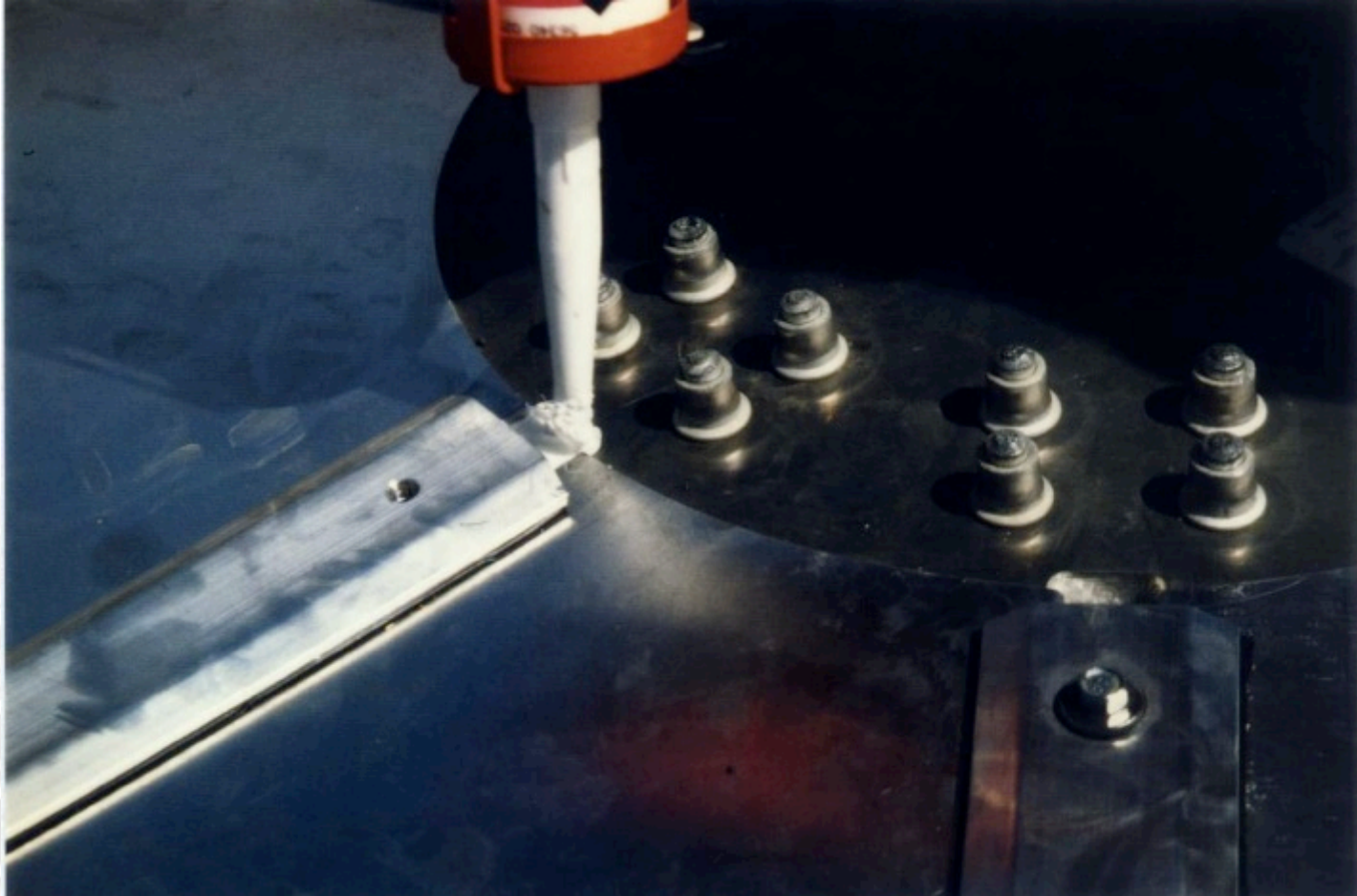
The installation gussets are replaced by normal plates and

Typical Dome Installation (shown on the bottom of a new 60m tank)



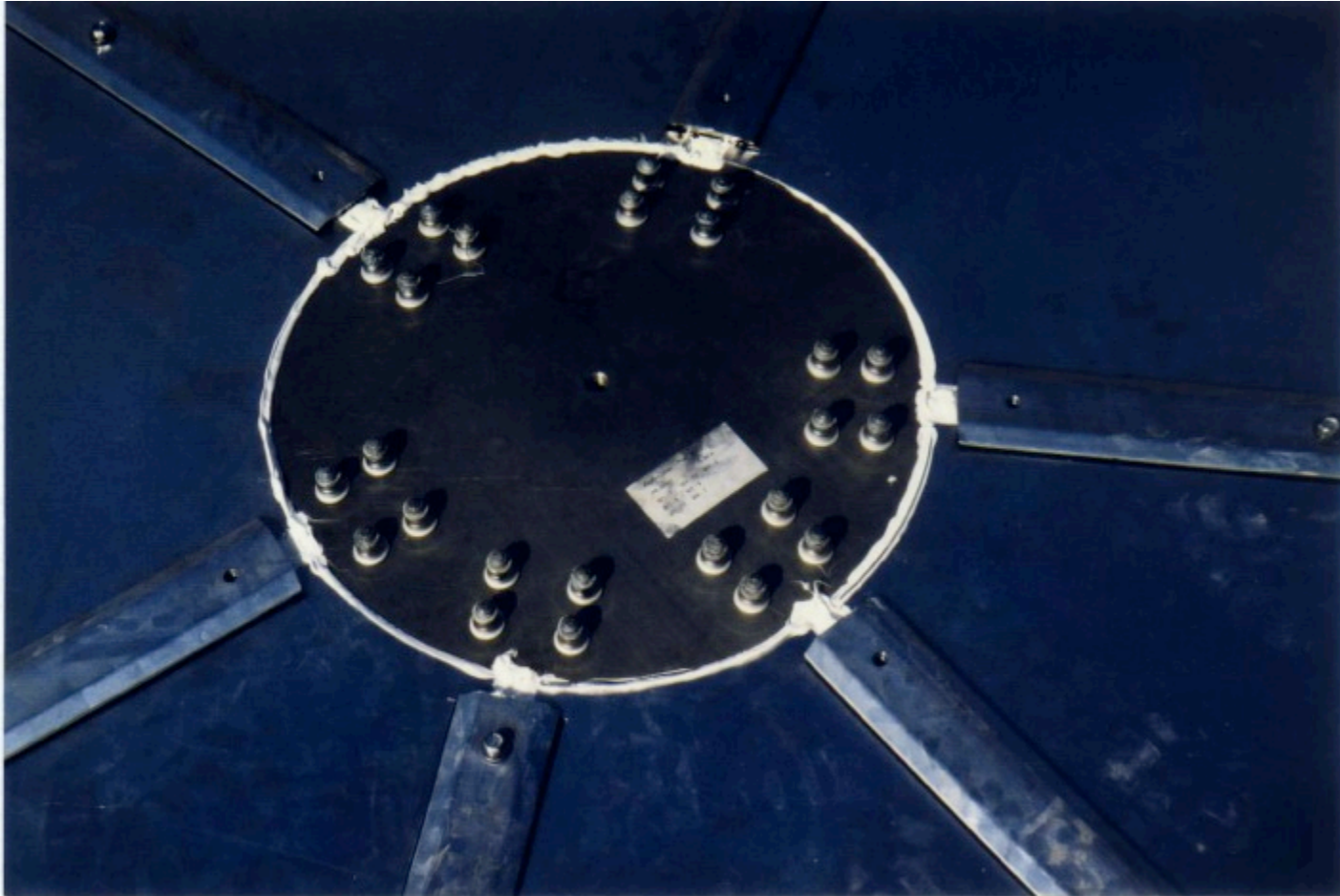
The Dome fixed to the tank with bolts or welded
In the picture a support bracket for a slide shoe is welded to the
tank

Typical Dome Installation (shown on the bottom of a new 60m tank)



Once the Dome is in place and all sheets are installed,
the gusset covers can be installed

Typical Dome Installation (shown on the bottom of a new 60m tank)



Silicone is used to compensate minor tolerances on the surface prior to install the cover

Typical Dome Installation (shown on the bottom of a new 60m tank)



The gusset cover is then installed and fixed with the center bolt. No silicone is used on the batten bars.

Typical Dome Installation (shown on the bottom of a new 60m tank)



The Dome is ready.